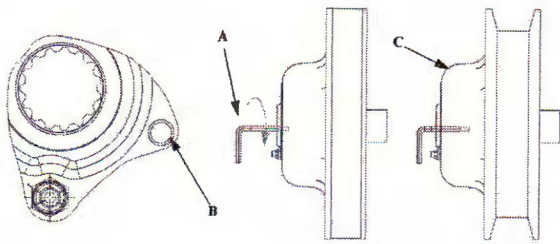


Drive Belt Removal - Team Driven



NOTE: Turn the key to the “OFF” position and allow the engine to come to a complete stop.

1. Verify the driven clutch is not in reverse. Remove the LH compartment door panel.

CAUTION
Damage to the driven clutch or L wrench will occur when attempting to open the driven clutch when the driven clutch is in the reverse position.

2. Insert the L wrench, PN 2874857 (A), into the threaded hole (B) located on the driven clutch, and turn it clockwise until the clutch sheaves are in the open position (C).
3. Remove the drive belt.

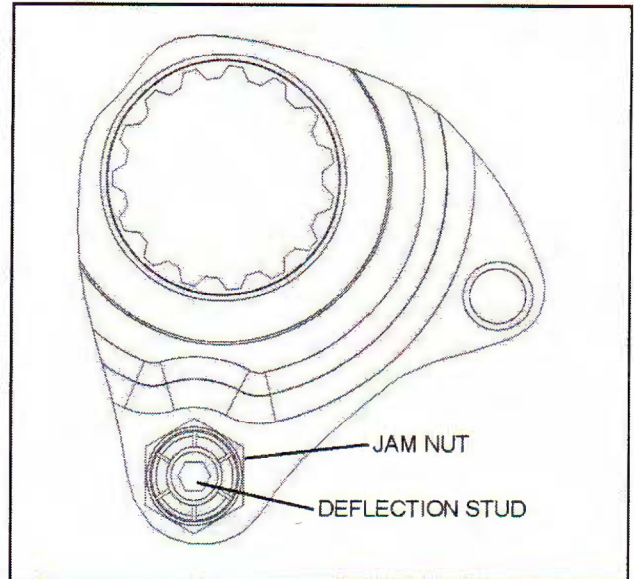
Drive Belt Installation - Team Driven

1. With the L wrench inserted into the threaded hole (B) and the sheaves in the open position, install the drive belt.

NOTE: Install belt so that the numbers can be read correctly on the left side of the machine or in the direction in which the belt was originally installed.

2. Remove the wrench. “Wiggle” the belt to remove slack while removing the wrench.
3. Close the clutch guard.

Adjusting Belt Deflection - Team Driven Clutch



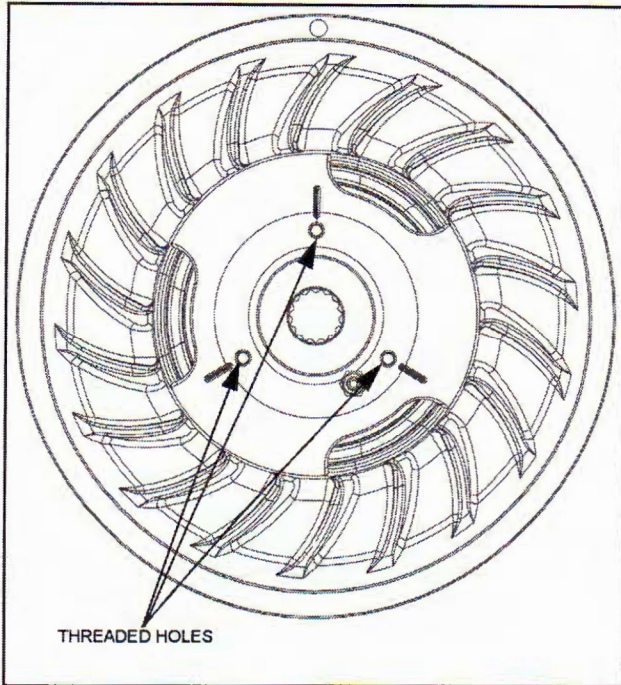
1. Loosen the jam nut.
2. Using a 1/8" Allen head wrench, turn the stud counter-clockwise to decrease belt deflection and clockwise to increase belt deflection.
3. When the proper belt deflection is achieved torque the lock nut to specification.

6

⊕ = T
Deflection Set Screw Lock Nut: 90-110 in-lbs (10-12 Nm)

PVT SYSTEM

Drive Belt Removal - SPA P2



NOTE: Turn the key to the "OFF" position and allow the engine to come to a complete stop.

1. Verify the driven clutch is not in reverse. Open the LH compartment door panel.

CAUTION

Damage to the driven clutch or L wrench will occur when attempting to open the driven clutch when the driven clutch is in the reverse position.

2. Insert the L wrench, PN 2874857, into one of the threaded holes located on the driven clutch. Turn it clockwise until the clutch sheaves are in the open position.
3. Remove the drive belt.

Drive Belt Installation - SPA P2

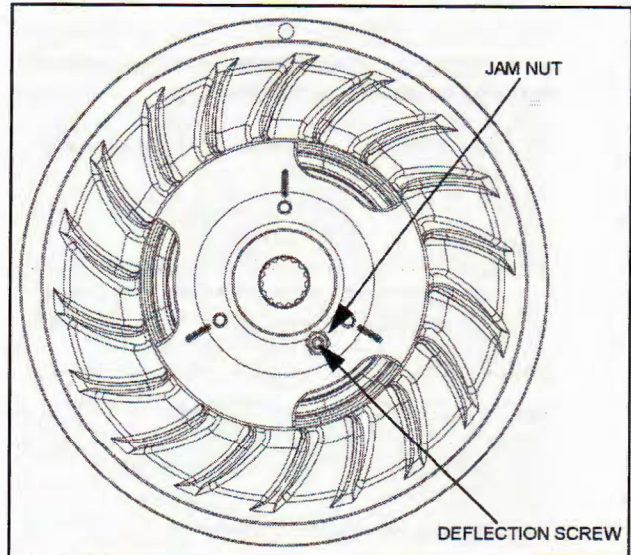
1. With the L wrench inserted into one of the threaded holes and the sheaves in the open position, install the drive belt.

NOTE: Install belt so that the numbers can be read correctly on the left side of the machine or in the direction in which the belt was originally installed.

2. Remove the wrench. "Wiggle" the belt to remove slack while removing the wrench.

Adjusting Belt Deflection - SPA P2

1. Loosen the deflection screw jam nut.
2. Using a 1/8 Allen driver, turn the deflection screw in or out to adjust the distance between the driven clutch sheaves.
3. When the proper belt deflection is achieved torque the lock nut to specification.



Deflection Screw Lock Nut: 110 in-lbs (12 Nm)